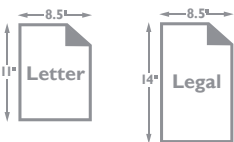




MFX-2550 / MFX-2570

INNOVATIVE DESKTOP **Document Solutions**



BUSINESS-CLASS DOCUMENT SOLUTIONS

muratec

The MFX-2550 and MFX-2570 from Muratec are multifunction document solutions that enable seamless document scanning, faxing, copying, printing and management, without the complicated interface and expensive modifications associated with competing devices.

Document Capture & Workflow Solutions

- High-speed color scanning to PC folders, e-mail addresses, FTP, document management systems and USB flash drives
- Capture two-sided color and monochrome documents quickly with the 80-sheet single pass duplex scanner (MFX-2570 only)
- Automatically index documents into popular document management applications using ScanTag®
- Standard fax functionality enables one-touch fax sending. Groups can be created to quickly broadcast documents to fax numbers and e-mail addresses

Document Output Solutions

- 25 page-per-minute (simplex) & 7 pages-per-minute (duplex) print speed
- Create distribution-ready documents using the standard shift-sorting output tray (MFX-2570 only)
- Built-in duplex printing reduces paper consumption
- Standard Ethernet and USB ports offer robust PC connections for printing
- Standard 500-sheet paper cassette and 50-sheet multipurpose bypass tray enable you to print on a variety of paper types and sizes
- Optional printing solutions include PCL5e/6, PostScript 3, barcode printing and PDF Direct printing

Shift Sorting –

Unique to a desktop MFP the MFX-2570 features shift-sorting to create distribution-ready output.



USB Host Drive –

The USB host drive is conveniently located at the front of the control panel and enables users to print from, or scan to, a USB flash drive.



Flexible Paper Options –

Both devices feature a standard 500-sheet paper cassette (letter/legal) and a 50-sheet multipurpose bypass tray. An optional 500-sheet cassette can be added to increase the paper capacity to 1,050-sheets.



Intuitive Operation – The control panel is easy-to-navigate making job execution and machine programming a snap!

Security Solutions

- Route inbound fax documents to an e-mail address or PC folder location
- Secure printing suppresses print jobs until a password has been entered on the control panel
- Users can be required to log-in prior to gaining machine access. The MFX-2550 and MFX-2570 support authentication through Active Directory
- Secure fax reception suppresses fax documents from printing until a password has been entered
- Send scanned documents as secure PDF's that require password entry prior to opening

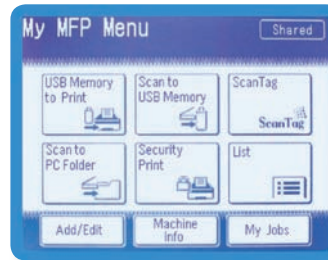
Intuitive User Interface

- 5.8" touch screen walks users through machine programming, job execution and troubleshooting
- My MFP mode allows users to access commonly used features from a single screen, regardless of the mode in which the feature resides
- Personal address books and custom mode screens can be created for each user to secure contact information and provide quick access to the features used most often
- ScanTag® provides step-by-step document indexing instructions when scanning documents into a document management system

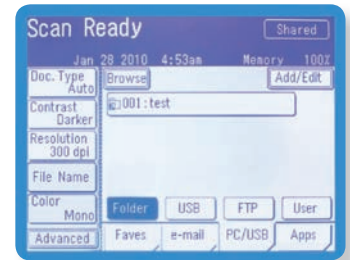
AN INTERFACE DESIGNED FOR SIMPLICITY



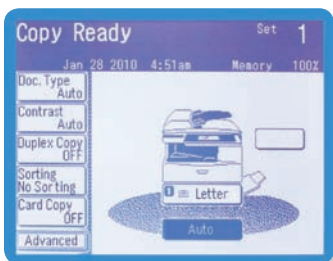
The MFX-2550 and MFX-2570 feature a 5.8" backlit touch screen that quickly guides users through machine programming, job execution and troubleshooting. Using the illuminated keys on the control panel users can effortlessly toggle between modes, view job status, change settings, adjust the screen view and more.



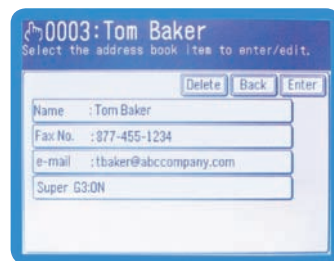
My MFP – My MFP consolidates the most frequently used features, regardless of mode, onto a single screen. Each user can have their own customized My MFP screen.



Scan to Anywhere – Quickly scan documents to PC folders, FTP, e-mail addresses or USB flash drives.



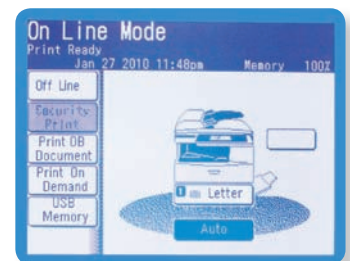
Convenient Desktop Copier – Powerful copying features such as digital zoom, contrast adjustment, image combination and ID card copying are available at the touch of a button.



Address Book – The address book can store up to 2,000 contacts each containing a fax number, e-mail address and multiple group locations.



Fast Contact Lookup – Quickly locate contacts registered in your MFP address book, and/or a corporate LDAP server, using this embedded "Search" tool.



Printing Solutions – Access the print menu to release secure print jobs and print documents stored in MFP memory or USB flash drives.

UNIQUE SOLUTIONS TO DRIVE YOUR UNIQUE BUSINESS

The MFX-2550 and MFX-2570 feature a host of unique solutions that were designed based on feedback from our customers. From tighter integration with document management applications, to fax server connectivity and print-for pay applications, these MFP's enable users to enjoy the performance, efficiency and cost-benefits of their technology infrastructure.

ScanTag® ScanTag® is a document indexing tool that enables users to input metadata at the MFP control panel and then automatically scan and index the document without having to return to their PC. ScanTag® has been integrated with the following document management applications:



DirectScan™ DirectScan™ allows users to scan documents directly into PC folders without having to install any additional hardware or software connectors. PC folder locations can be registered as one-touch buttons or users can browse the network from the MFP touch screen as if they were at their PC using Windows Explorer.

E-mail Gateway™ E-mail Gateway™ enables the MFX-2550 and MFX-2570 to integrate with network fax servers. Users simply enter the destination fax number and select [Start], as if sending a traditional fax, and the device will automatically convert the fax number into a dialing string that can be utilized by the fax server.

Scan to Print Scan to Print is an innovative method of creating color copies. Users can scan a color image on the MFX-2550 or MFX-2570 and route the image to a network color laser printer (pre-registered) for output.



Foreign Device Interface – The foreign device interface can be utilized to connect the MFX-2550 and MFX-2570 to a variety of third-party hardware peripherals including print-for-pay terminals and ID card authentication devices.



Transmission Archiving – Outbound fax and e-mail transmissions can be archived to create an audit trail of communication.



Single Pass Duplex Color Scanning – The MFX-2570 can easily replace desktop/workgroup color scanners by offering high-speed (up to 62 images-per-minute at 200 dpi) duplex color scanning.

ADVANCED DOCUMENT SOLUTIONS



USB Print/Scan/Back-Up

Use the USB host port to quickly scan documents to, print documents from, and back-up machine settings on a USB flash drive.



Inbound Fax Routing

Inbound fax documents can be routed to an e-mail address or PC folder location to conserve paper and increase document security.



OfficeBridge® Document Storage & Retrieval

Frequently printed documents, including forms, job applications and expense reports can be digitally stored on the MFP and instantly recalled and printed.



Shift-Sort Output

With this feature activated output will be shifted after each set, creating distribution-ready documents.



Legal-Size Platen Glass

The legal-size glass can be used to copy multipart forms, plastic identification cards, bound documents (books) and other originals that cannot be fed through the automatic document feeder.



Mixed Original Support

Letter and legal-size originals can be placed into the automatic document feeder together and the machine will automatically detect the paper size when scanning and print the documents on the appropriate paper size. Competing machines require users to separate originals based on paper size and manually collate the documents after printing.



Job Accounting

Breakdown machine usage by user and bill back departments for actual usage.



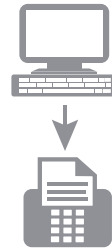
Custom E-Mail Templates

When scanning a document to an e-mail address you can add a custom subject line, text message and file name (document being scanned) to help the recipient identify the sender and subject of your message.



Secure PDF

Users can password-protect PDF files sent from the machine. The recipient will need to enter the document password prior to opening the file.



PC Faxing

Send documents from PC applications (such as Microsoft Word, Excel, Acrobat, etc.) to fax locations without having to print and manually fax the document.



OfficeBridge Browser-Based Management

Administrators can register address books, adjust network settings, back-up and restore MFP settings, update firmware, set security policies and more using an intuitive browser-based management tool. This tool is embedded on the MFP and does not require any additional software installation.



ID Card Copy

Quickly copy both sides of identification cards, such as a driver's license and/or insurance card, and produce the images on a single sheet of paper. Users can select a single card, two cards, personal-check or business-check in this mode.



Mixed Transmission

Send a document simultaneously to a fax number and e-mail address.



Scan Confirmation Stamp

A small stamp can be placed on each document as it is scanned through the document feeder to provide confirmation that the document was scanned. (MFX-2570 only)

MFX-2550 / MFX-2570 CONFIGURATION

BASE CONFIGURATION



MFX-2550

- 25 page-per-minute output
- 80-sheet automatic document feeder
- Duplex printing
- 500-sheet paper cassette
- 50-sheet multipurpose bypass tray
- 250-sheet output tray capacity
- Color scan to PC, FTP, e-mail and USB flash drives
- Host-based network printing

MFX-2570

- 25 page-per-minute output
- 80-sheet single pass duplex scanner
- Duplex printing
- 500-sheet paper cassette
- 50-sheet multipurpose bypass tray
- 250-sheet output tray capacity
- Color scan to PC, FTP, e-mail and USB flash drives
- Host-based network printing
- Shift-Sorting

PAPER OPTIONS



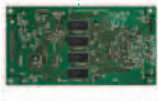
500-Sheet Cassette (2550CAS)

- One 2550CAS can be added to the base unit to bring the total capacity to 1,050-sheets.

Paper Cabinet (2030CAB)

- The 2030CAB is a storage cabinet that can hold additional reams of paper, supplies and manuals.
- The cabinet features locking wheels for portability and stability.
- The base unit and extra 2550CAS can sit comfortably on the 2030CAB.

PRINTING OPTIONS



PCL 5e / 6 (PCL700)

- The PCL700 can be added to increase performance.
- PCL 5e enables printing from the following systems:
 - Sun Solaris 9-10
 - HP-UX 11i versions 1, 1.5, 1.6, 2 & 3
 - AIX versions 5L 5.3/6.1
 - AS/400 V5 versions 1, 2, 3 & 4, V6 version 1
 - SAP



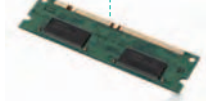
PostScript3 (PS700)

- The PS700 can be added to enable compatibility with Mac operating environments or specialty print applications.
- Features PDF Direct printing application that enables drag-and-drop PDF printing.
- Requires installation of PCL700.
- PS3 enables printing from the following Linux environments:
 - RedHat 3-5
 - SUSE 10.1 - 10.3, 11
 - Fedora 4-10



Barcode Printing (BC700)

- The BC700 enables the printing of barcodes including UPC/EAN, Interleave25, Code 39, Code 126, PostNet and more.
- Requires installation of PCL700.



PostScript3 Memory Expansion (PSMEM700)

- 1 GB memory expansion increases PostScript printing performance for specialty printing applications.
- This option is strongly recommended if using the PDF Direct printing feature.

MISCELLANEOUS OPTIONS

MURATEC OPTION



Mechanical Counter (DA7664)

- Quickly access machine print counts using this hard counter.

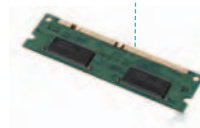
MURATEC OPTION

Telephone Handset (2550THK)

- Side-mounting telephone handset.

Foreign Device Interface (2550FDI)

- Enables connection to third-party hardware solutions including print-for-pay terminals and authentication devices.
- Compatibility varies by peripheral.



OfficeBridge Memory Expansion (OBMEM700)

- Increases the memory space in the OfficeBridge application.
- Increase OfficeBridge document storage capacity.

MURATEC OPTION

Stamp Kit (2570STAMP)

- The scan stamp places a small stamp on each scanned page to insure that it was scanned.
- Available on the MFX-2570 only.

SPECIFICATIONS – MFX-2550/MFX-2570

GENERAL

Print Speed (Simplex)	25 pages-per-minute
Print Speed (Duplex)	7 pages-per-minute
User Interface	5.8" Touch Screen
Document Feeder Capacity	80-sheets
Single Pass Duplex Scanning	MFX-2570 only
Standard Paper Capacity	550-sheets (includes 50-sheet bypass tray)
Maximum Paper Capacity	1,050-sheets
Cassette Paper Weight	20 - 28 lb.
Paper Loading (Cassette)	Face Up
Bypass Paper Weight	20 - 28 lb.
Paper Loading (Bypass)	Face Down
Output Tray Capacity	250-sheets
Output Position	Face Down
Shift Sorting	MFX-2570 only
Duplex Printing	1:2, 2:2, 2:1
Dimensions (H x W x D) Weight (2550)	17.56" x 20.47" x 19.92" / 52.69 lbs.
Dimensions (H x W x D) Weight (2570)	18.62" x 20.47" x 19.92" / 57.98 lbs.
DHCP Compliant	Yes (Default On)
Ethernet Connection	Standard 10/100 BaseT, RJ-45 connection
Network Protocol	TCP/IP
Local Connection	Standard USB 2.0
System Memory	128 MB / 128 MB (Std / Max)
Toner Yield	16,000 @ 6% page coverage
Drum Yield	30,000

COPY

Platen Glass	8.5" x 14"
First-Copy-Out-Time (Platen)	6 seconds
First-Copy-Out-Time (Document Feeder)	12 seconds
Warm-up Time	20 seconds
Paper Tray Selection	Automatic or Manual
Image Combination	2:1, 4:1, ID Copy
Zoom Ratio	25 - 400% (platen) / 25 - 100% (document feeder)
Number of Copies	1-99
Electronic Sorting	Standard

SCAN

Resolution (dpi)	600 x 600
Grayscale	256 levels
File Formats	PDF, TIFF, JPEG, Secure PDF
Scan to E-mail	Standard
E-mail Address Entry	LDAP, Address Book, Manual
Scan to USB Flash Drive	Standard
Scan to MFP Storage	Standard
Scan to FTP	Standard
Scan to Network	Standard
Compatibility	TWAIN
Simplex Mono Scan Speed (200 dpi)	31 images-per-minute

Duplex Mono Scan Speed (200 dpi) - MFX-2570 only	62 images-per-minute
Simplex Color Scan Speed (200 dpi)	10 images-per-minute
Duplex Color Scan Speed (200 dpi) - MFX-2570 only	20 images-per-minute
Simplex Mono / Color Scan Speed (300 / 600 dpi)	20 images-per-minute
Duplex Mono / Color Scan Speed (300 / 600 dpi) - MFX-2570 only	40 images-per-minute
Special Scan Features	Scan to Color Printer E-Mail Attachment Support Outbound Scan Archiving Domain Name Shortcut Registration Batch Scanning

PRINT

Resolution	600 x 600 dpi
OS Support	Windows 2000, XP, Vista, Windows 7, Server 2003 & 2008; Mac OS 10.2 - 10.5 Various Linux, UNIX (Sun Solaris, AIX), SAP and AS/400
Standard PDL	Muratec Printing System (Host-based)
Optional PDL	PCL 5e/6, PostScript3, Barcode, PDF Direct, XPS
Print from USB Flash Drive	Standard
Print from MFP Storage	Standard
Secure Print	Standard

FAX

Modem Speed	33.6 Kbps
Max. Compression	JBIG
Address Book	2,000 locations
Group Dialing	200 groups
PC-based Faxing	Yes
Fax Server Integration	Yes
Security Reception	Yes
Fax Forwarding to E-mail	Yes
Outbound Fax Archiving	Yes
Special Fax Features	Delayed Transmission VoIP Support Secure Polling Custom Coversheet Insertion Batch Transmission

OPTIONS & ACCESSORIES ITEM NO

500-sheet paper cassette	2550CAS
Paper Cabinet	2030CAB
PCL 5e/6	PCL700
PostScript3	PS700
Barcode Printing	BC700
PostScript Memory	PSMEM700
PostScript3 and Barcode Printing	PS700BC
OfficeBridge Memory	OBMEM700
Mechanical Counter	DA7664
Telephone Handset	2550THK
Foreign Device Interface	2550FDI
Stamp Kit	2570STAMP



As an ENERGY STAR® partner, Murata Machinery, Ltd. has determined that these products meet the ENERGY STAR® guidelines for energy efficiency. Muratec and the Muratec logo are trademarks and/or registered trademarks of Murata Machinery, Ltd. or its subsidiaries in the United States and other countries. Other names, such as those of products of other companies, are the trademarks or registered trademarks of their respective companies. All specifications subject to change without notice.



Muratec America, Inc.
3301 East Plano Parkway, Suite 100, Plano, Texas 75074
For more information on Muratec products or services, call (469) 429-3300 or visit our web site at www.muratec.com